

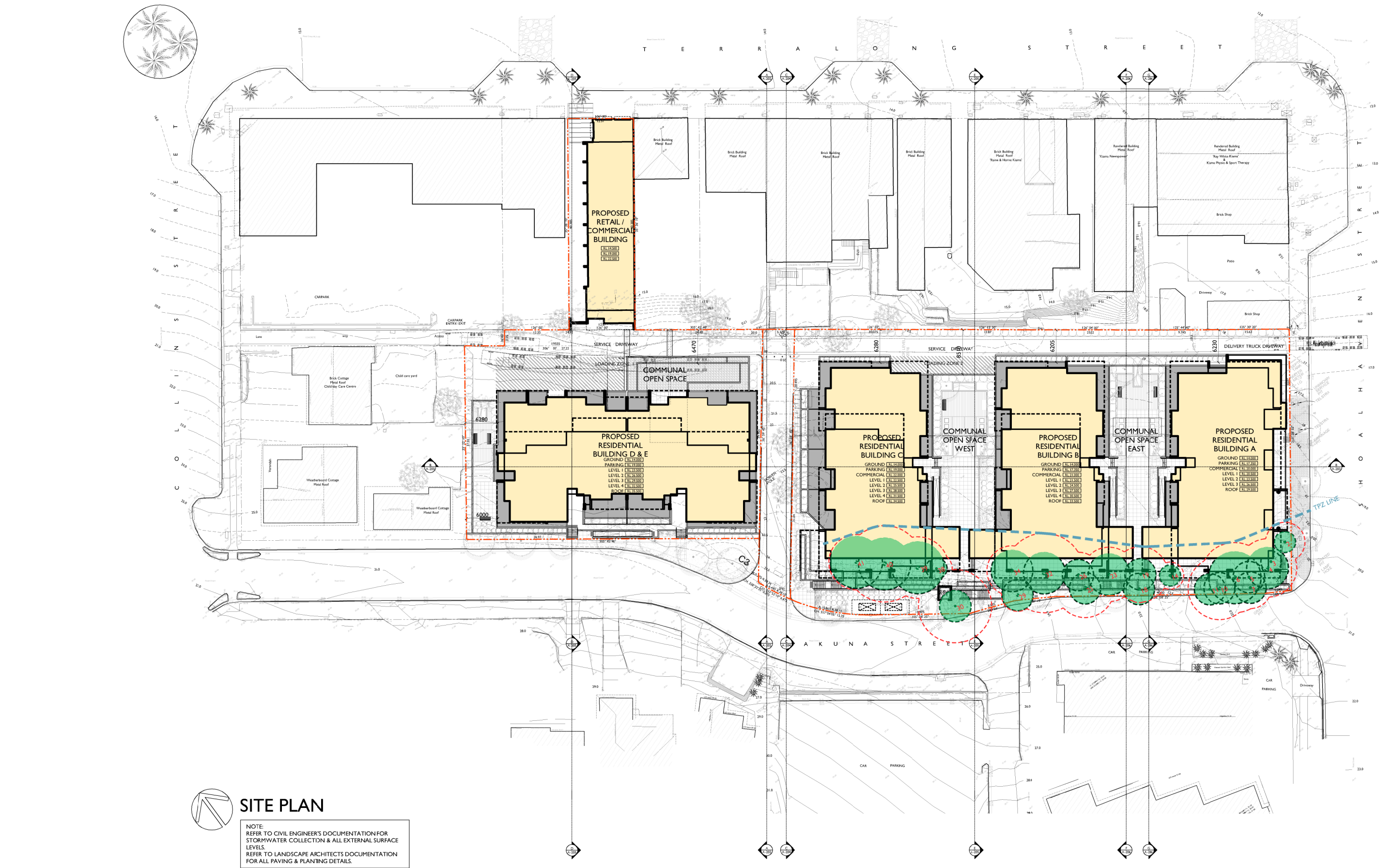
# **ANNEXURE 1**

**Architectural Drawing Set**

**prepared by  
ADM Architects**

**Akuna Street, Terralong Street  
and Shoalhaven Street, Kiama**

**Part 2 - Drawings A-100 - A107**



ISSUE	DATE	DESCRIPTION	SP	ADM	initials	chkd
G	27.10.17	RE-ISSUED FOR DEVELOPMENT APPLICATION	SP	ADM		
F	20.10.17	RE-ISSUED FOR DEVELOPMENT APPLICATION	SP	ADM		
E	27.09.17	RE-ISSUED FOR DEVELOPMENT APPLICATION	SP	ADM		
D	19.07.17	RE-ISSUED FOR DEVELOPMENT APPLICATION	SP	ADM		
C	15.03.17	RE-ISSUED FOR DEVELOPMENT APPLICATION	SP	ADM		
B	25.11.16	RE-ISSUED FOR DEVELOPMENT APPLICATION	SP	ADM		
A	14.11.16	ISSUED FOR DEVELOPMENT APPLICATION	SP	ADM		

sign \_\_\_\_\_ date \_\_\_\_\_

These drawings are not to be scaled. Figured dimensions shall be used in all cases.

LEGEND	
	TPZ LINE
	TPZ
	EXISTING TREES / TREE NUMBER

COPYRIGHT - These drawings remain the exclusive copyright of ADM Architects. Reproductions in any form whether electronic, digital or otherwise shall not be allowed except by express permission granted in writing by ADM Architects.

FIGURED DIMENSIONS - These drawings are not to be scaled. Figured dimensions shall be used in all cases.

DISCREPANCIES IN DIMENSIONS/POSITIONS/LOCATIONS/FINISHES The Contractor is to verify any dimensional, location or finish discrepancy with ADM Architects prior to any physical construction or setting out so that ADM Architects is given the opportunity to resolve potential discrepancies or conflicts in sufficient time without causing abortive work. The Contractor shall be responsible for notifying ADM Architects of any such discrepancy or conflict that may arise on site.

COORDINATION OF WORKS - These drawings are to be read in conjunction with the full set of consultant's drawings, specifications, reports and DA conditions.

NOMINATED ARCHITECT - The nominated Architect for ADM Projects (Australia) Pty Ltd T/as ADM Architects is Angelo Di Martino AIB No.7608

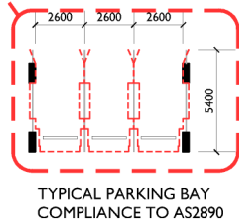


NICOLAS  
DAOUD &  
CO PTY. Ltd

Project  
DEMOLITION OF EXISTING STRUCTURES AND CONSTRUCTION  
OF A MIXED USE DEVELOPMENT COMPRISING RESIDENTIAL  
APARTMENTS ABOVE RETAIL SHOPS, COMMERCIAL TENANCIES  
AND ASSOCIATED CARPARKING AREAS

at  
LOT 1, DP50193, LOT 3, DP1104857, PT.1, DP506764, LOTS 100 & 200,  
DP1017091,  
AKUNA & TERRALONG STREET  
KIAMA

scale	1:700 @ A3
date	OCTOBER 2017
drawn	djm SJ chkd ADM
drawing	DEVELOPMENT APPLICATION
SITE PLAN	
Project No.	2016-19(a)
Drawing No.	A-100
issue	G



**BASEMENT FLOOR PLAN (RETAIL & RESIDENTIAL VISITOR PARKING LEVEL)**  
(128 COMMERCIAL CAR SPACES, 50 RESIDENTIAL VISITOR PARKING SPACES)

B A	26.10.17 27.09.17	RE-ISSUED FOR DEVELOPMENT APPLICATION ISSUE FOR DEVELOPMENT APPLICATION	SP SP	ADM ADM
ISSUE	DATE	DESCRIPTION	initials	chkd
sign			date	
□ These drawings are not to be scaled. Figured dimensions shall be used in all cases.				

COPYRIGHT - These drawings remain the exclusive copyright of ADM Architects. Reproductions in any form whether electronic, digital or otherwise shall not be allowed except by express permission granted in writing by ADM Architects.

FIGURED DIMENSIONS - These drawings are not to be scaled. Figured dimensions shall be used in all cases.

DISCREPANCIES IN DIMENSIONS/POSITIONS/LOCATIONS/FINISHES The Contractor is to verify any dimensional, location or finish discrepancy with ADM Architects prior to any physical construction or setting out so that ADM Architects is given the opportunity to resolve potential discrepancies or conflicts in sufficient time without causing abortive work. The Contractor shall be responsible for notifying ADM Architects of any such discrepancy or conflict that may arise on site.

COORDINATION OF WORKS - These drawings are to be read in conjunction with the full set of consultant's drawings, specifications, reports and DA conditions.

NOMINATED ARCHITECT - The nominated Architect for ADM Projects (Australia) Pty Ltd T/as ADM Architects is Angelo Di Martino ARB No.7608



**NICOLAS  
DAOUD &  
CO PTY. Ltd**

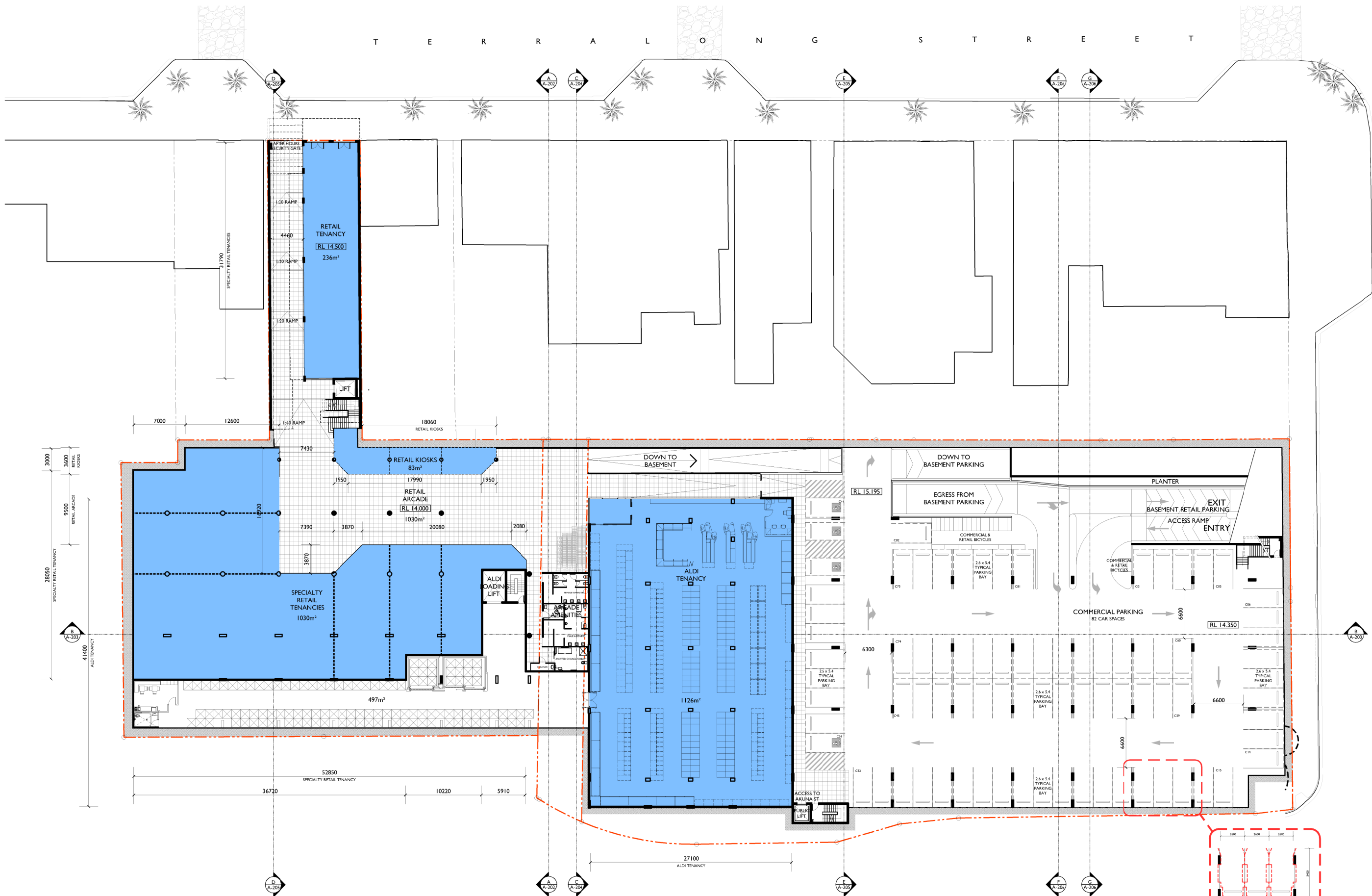
Project  
DEMOLITION OF EXISTING STRUCTURES AND CONSTRUCTION  
OF A MIXED USE DEVELOPMENT COMPRISING RESIDENTIAL  
APARTMENTS ABOVE RETAIL SHOPS, COMMERCIAL TENANCIES  
AND ASSOCIATED CARPARKING AREAS

at  
LOT 1, DP50193, LOT 3, DP1104857, PT.1, DP506764, LOTS 100 & 200,  
DP1017091,  
AKUNA & TERRALONG STREET  
KIAMA

scale	1:500 @ A3		
date	OCTOBER 2017		
drawn	djm	SJ	chkd ADM
drawing	DEVELOPMENT APPLICATION		
BASEMENT FLOOR PLAN (RETAIL & VISITOR PARKING)			
Project No.	Drawing No.		issue
2016-19(a)	A-101		B

NOT FOR CONSTRUCTION





## GROUND FLOOR PLAN (RETAIL LEVEL)

TERRALONG STREET LEVEL (RETAIL AREA = 2509m² & ARCADE AREA = 1187.5m²)(82 CAR SPACES)

ISSUE	DATE	DESCRIPTION	INITIALS	CHKD
G	27.10.17	RE-ISSUED FOR DEVELOPMENT APPLICATION	SP	ADM
F	20.10.17	RE-ISSUED FOR DEVELOPMENT APPLICATION	SP	ADM
E	27.09.17	RE-ISSUED FOR DEVELOPMENT APPLICATION	SP	ADM
D	19.07.17	RE-ISSUED FOR DEVELOPMENT APPLICATION	SJ	ADM
C	15.03.17	RE-ISSUED FOR DEVELOPMENT APPLICATION	SJ	ADM
B	25.11.16	RE-ISSUED FOR DEVELOPMENT APPLICATION	SP	ADM
A	14.11.16	ISSUED FOR DEVELOPMENT APPLICATION	SP	ADM

sign date  
These drawings are not to be scaled. Figured dimensions shall be used in all cases.

COPYRIGHT - These drawings remain the exclusive copyright of ADM Architects. Reproductions in any form whether electronic, digital or otherwise shall not be allowed except by express permission granted in writing by ADM Architects.  
FIGURED DIMENSIONS - These drawings are not to be scaled. Figured dimensions shall be used in all cases.  
DISCREPANCIES IN DIMENSIONS/POSITIONS/LOCATIONS/FINISHES The Contractor is to verify any dimensional, location or finish discrepancy with ADM Architects prior to any physical construction or setting out so that ADM Architects is given the opportunity to resolve potential discrepancies or conflicts in sufficient time without causing abortive work. The Contractor shall be responsible for notifying ADM Architects of any such discrepancy or conflict that may arise on site.  
COORDINATION OF WORKS - These drawings are to be read in conjunction with the full set of consultant's drawings, specifications, reports and DA conditions.  
NOMINATED ARCHITECT - The nominated Architect for ADM Projects (Australia) Pty Ltd T/AS ADM Architects is Angelo Di Martino A/B No.7608

adm  
ARCHITECTS

94 Kembla St Wollongong NSW 2500 PO Box 3041 Wollongong  
ph: 02 4228 6400 fax: 02 4228 6455 www.admarchitects.com.au

NICOLAS  
DAOUD &  
CO PTY. Ltd

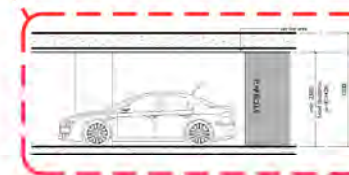
Project  
DEMOLITION OF EXISTING STRUCTURES AND CONSTRUCTION  
OF A MIXED USE DEVELOPMENT COMPRISING RESIDENTIAL  
APARTMENTS ABOVE RETAIL SHOPS, COMMERCIAL TENANCIES  
AND ASSOCIATED CARPARKING AREAS  
at  
LOT 1, DP50193, LOT 3, DP1104857, PT.1, DP506764, LOTS 100 & 200,  
DPI017091,  
AKUNA & TERRALONG STREET  
KIAMA

scale 1:500 @ A3  
date OCTOBER 2017  
drawn djm sj chkd ADM  
drawing  
DEVELOPMENT APPLICATION  
GROUND FLOOR PLAN (RETAIL LEVEL)  
Project No. Drawing No. issue  
2016-19(a) A-102 G

NOT FOR CONSTRUCTION



RESIDENTIAL PARKING FLOOR PLAN  
145 RESIDENTIAL CAR SPACES



TYPICAL DISABLED PARKING BAY  
COMPLIANCE TO AS1428

ISSUE	DATE	DESCRIPTION	INITIALS	CHKD
G	16.11.17	AMENDED FOR DEVELOPMENT APPLICATION	SP	ADM
F	26.10.17	AMENDED FOR DEVELOPMENT APPLICATION	SP	ADM
E	20.10.17	AMENDED FOR DEVELOPMENT APPLICATION	SP	ADM
D	27.09.17	RE-ISSUED FOR DEVELOPMENT APPLICATION	SP	ADM
C	19.07.17	RE-ISSUED FOR DEVELOPMENT APPLICATION	SP	ADM
B	25.11.16	RE-ISSUED FOR DEVELOPMENT APPLICATION	SP	ADM
A	14.11.16	ISSUED FOR DEVELOPMENT APPLICATION	SP	ADM

sign date  
These drawings are not to be scaled. Figured dimensions shall be used in all cases.

COPYRIGHT - These drawings remain the exclusive copyright of ADM Architects. Reproductions in any form whether electronic, digital or otherwise shall not be allowed except by express permission granted in writing by ADM Architects.  
FIGURED DIMENSIONS - These drawings are not to be scaled. Figured dimensions shall be used in all cases.  
DISCREPANCIES IN DIMENSIONS/POSITIONS/LOCATIONS/FINISHES The Contractor is to verify any dimensional, location or finish discrepancy with ADM Architects prior to any physical construction or setting out so that ADM Architects is given the opportunity to resolve potential discrepancies or conflicts in sufficient time without causing abortive work. The Contractor shall be responsible for notifying ADM Architects of any such discrepancy or conflict that may arise on site.  
COORDINATION OF WORKS - These drawings are to be read in conjunction with the full set of consultant's drawings, specifications, reports and DA conditions.  
NOMINATED ARCHITECT - The nominated Architect for ADM Projects (Australia) Pty Ltd T/A ADM Architects is Angelo Di Martino ARB No 7608



94 Kembla St, Wollongong NSW 2500 PO Box 3061 Wollongong  
ph: 02 4228 6400 fax: 02 4228 4455 www.admarchitects.com.au

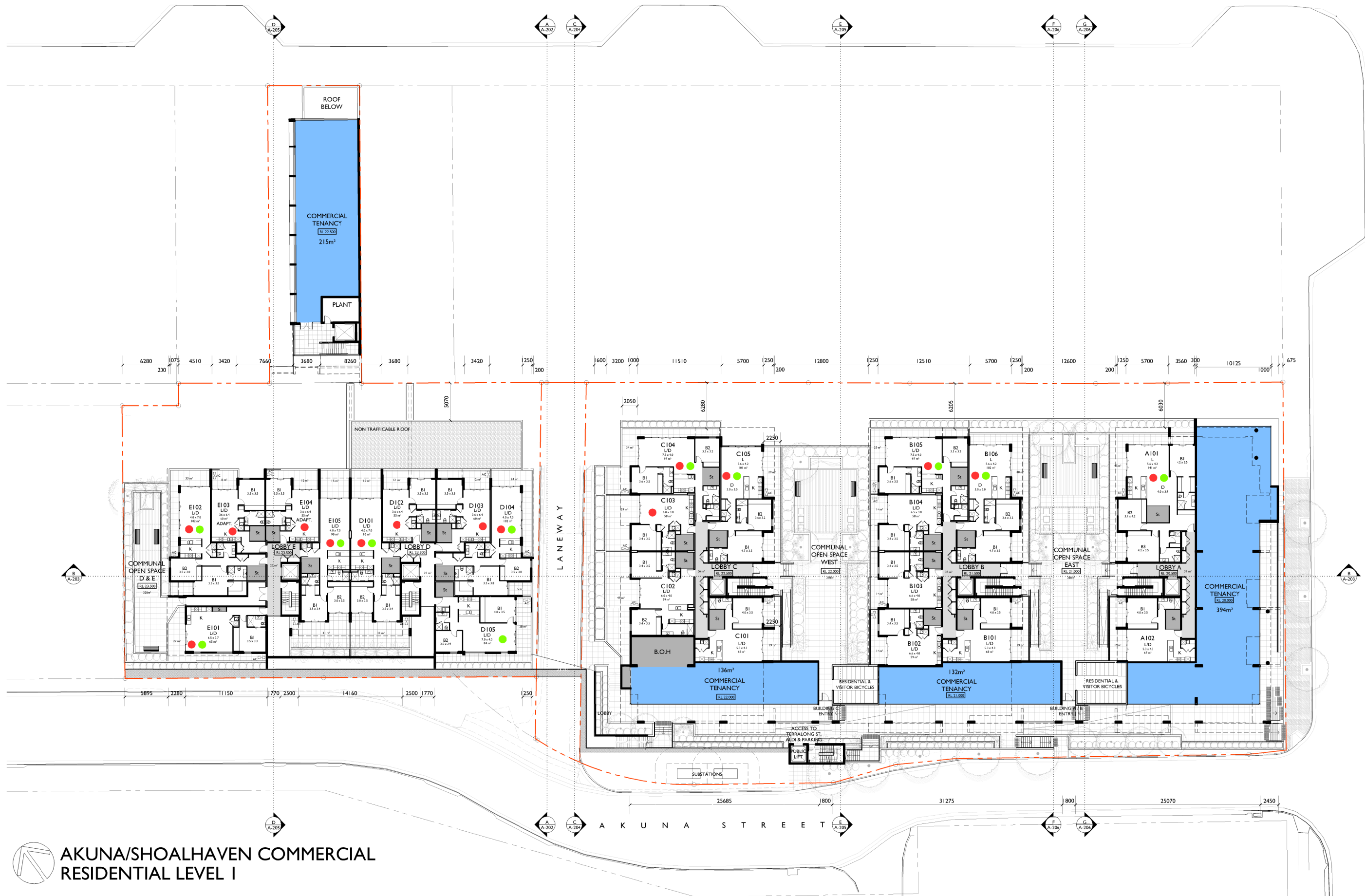
NICOLAS  
DAOUD &  
CO PTY. Ltd

Project  
DEMOLITION OF EXISTING STRUCTURES AND CONSTRUCTION  
OF A MIXED USE DEVELOPMENT COMPRISING RESIDENTIAL  
APARTMENTS ABOVE RETAIL SHOPS, COMMERCIAL TENANCIES  
AND ASSOCIATED CARPARKING AREAS  
at  
LOT 1, DP50193, LOT 3, DP1104857, PT.1, DP506764, LOTS 100 & 200,  
DP1017091,  
AKUNA & TERRALONG STREET  
KIAMA

scale 1:500 @ A3  
date NOVEMBER 2017  
drawn djm SJ chkd ADM  
drawing  
DEVELOPMENT APPLICATION  
RESIDENTIAL PARKING FLOOR PLAN  
Project No. Drawing No. issue  
2016-19(a) A-103 G

NOT FOR CONSTRUCTION





## AKUNA/SHOALHAVEN COMMERCIAL RESIDENTIAL LEVEL 1

ISSUE	DATE	DESCRIPTION	INITIALS	CHKD
G	27.10.17	RE-ISSUED FOR DEVELOPMENT APPLICATION	SP	ADM
F	20.10.17	RE-ISSUED FOR DEVELOPMENT APPLICATION	SP	ADM
E	27.09.17	RE-ISSUED FOR DEVELOPMENT APPLICATION	SP	ADM
D	19.07.17	RE-ISSUED FOR DEVELOPMENT APPLICATION	SJ	ADM
C	15.03.17	RE-ISSUED FOR DEVELOPMENT APPLICATION	SP	ADM
B	25.11.16	RE-ISSUED FOR DEVELOPMENT APPLICATION	SP	ADM
A	14.11.16	ISSUED FOR DEVELOPMENT APPLICATION	SP	ADM

sign \_\_\_\_\_ date \_\_\_\_\_  
These drawings are not to be scaled. Figured dimensions shall be used in all cases.

### LEGEND

- SUNLIGHT ACCESS
- CROSS VENTILATION

**COPYRIGHT** - These drawings remain the exclusive copyright of ADM Architects. Reproductions in any form whether electronic, digital or otherwise shall not be allowed except by express permission granted in writing by ADM Architects.

**FIGURED DIMENSIONS** - These drawings are not to be scaled. Figured dimensions shall be used in all cases.

**DISCREPANCIES IN DIMENSIONS/POSITIONS/LOCATIONS/FINISHES** The Contractor is to verify any dimensional, location or finish discrepancy with ADM Architects prior to any physical construction or setting out so that ADM Architects is given the opportunity to resolve potential discrepancies or conflicts in sufficient time without causing abortive work. The Contractor shall be responsible for notifying ADM Architects of any such discrepancy or conflict that may arise on site.

**COORDINATION OF WORKS** - These drawings are to be read in conjunction with the full set of consultant's drawings, specifications, reports and DA conditions.

**NOMINATED ARCHITECT** - The nominated Architect for ADM Projects (Australia) Pty Ltd T/as ADM Architects is Angelo Di Martino ARB No. 7408



94 Kembla St Wollongong NSW 2500 PO Box 3061 Wollongong  
ph: 02 4228 6400 fax: 02 4228 6455 www.admarchitects.com.au

**NICOLAS DAUD & CO PTY. Ltd**

Project  
DEMOLITION OF EXISTING STRUCTURES AND CONSTRUCTION  
OF A MIXED USE DEVELOPMENT COMPRISING RESIDENTIAL  
APARTMENTS ABOVE RETAIL SHOPS, COMMERCIAL TENANCIES  
AND ASSOCIATED CARPARKING AREAS

at  
LOT 1, DP50193, LOT 3, DP1104857, PT.1, DP506764, LOTS 100 & 200,  
DP1017091,  
AKUNA & TERRALONG STREET  
KIAMA

scale 1:500 @ A3  
date OCTOBER 2017  
drawn djm SJ chkd ADM  
drawing  
DEVELOPMENT APPLICATION  
AKUNA COMMERCIAL/RESIDENTIAL LEVEL 1  
Project No. Drawing No. issue  
2016-19(a) A-104 G

NOT FOR CONSTRUCTION



RESIDENTIAL LEVEL 2 PLAN

ISSUE	DATE	DESCRIPTION	INITIALS	CHKD
G	27.10.17	RE-ISSUED FOR DEVELOPMENT APPLICATION	SP	ADM
F	20.10.17	RE-ISSUED FOR DEVELOPMENT APPLICATION	SP	ADM
E	27.09.17	RE-ISSUED FOR DEVELOPMENT APPLICATION	SP	ADM
D	19.07.17	RE-ISSUED FOR DEVELOPMENT APPLICATION	SJ	ADM
C	15.03.17	RE-ISSUED FOR DEVELOPMENT APPLICATION	SP	ADM
B	25.11.16	RE-ISSUED FOR DEVELOPMENT APPLICATION	SP	ADM
A	14.11.16	ISSUED FOR DEVELOPMENT APPLICATION	SP	ADM

sign date  
These drawings are not to be scaled. Figured dimensions shall be used in all cases.

LEGEND	
●	SUNLIGHT ACCESS
●	CROSS VENTILATION

**COPYRIGHT** - These drawings remain the exclusive copyright of ADM Architects. Reproductions in any form whether electronic, digital or otherwise shall not be allowed except by express permission granted in writing by ADM Architects.

**FIGURED DIMENSIONS** - These drawings are not to be scaled. Figured dimensions shall be used in all cases.

**DISCREPANCIES IN DIMENSIONS/POSITIONS/LOCATIONS/FINISHES** The Contractor is to verify any dimensional, location or finish discrepancy with ADM Architects prior to any physical construction or setting out so that ADM Architects is given the opportunity to resolve potential discrepancies or conflicts in sufficient time without causing abortive work. The Contractor shall be responsible for notifying ADM Architects of any such discrepancy or conflict that may arise on site.

**COORDINATION OF WORKS** - These drawings are to be read in conjunction with the full set of consultant's drawings, specifications, reports and DA conditions.

**NOMINATED ARCHITECT** - The nominated Architect for ADM Projects (Australia) Pty Ltd T/as ADM Architects is Angelo Di Martino AIB No 7608

**adm**  
ARCHITECTS

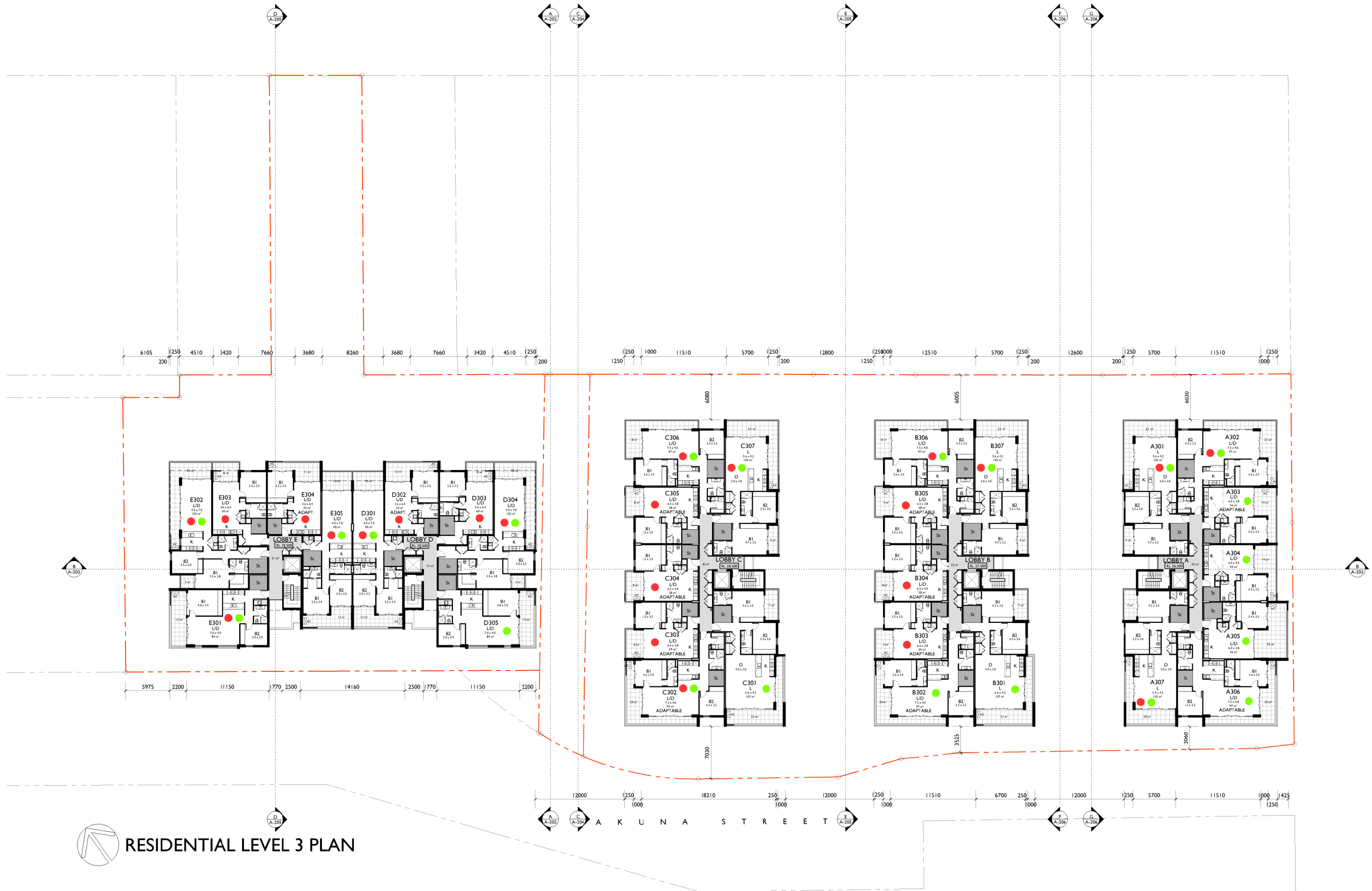
94 Kembla St Wollongong NSW 2500 PO Box 3061 Wollongong  
ph: 02 4228 6400 fax: 02 4228 4955 www.admarchitects.com.au

**NICOLAS  
DAOUD &  
CO PTY. Ltd**

Project  
DEMOLITION OF EXISTING STRUCTURES AND CONSTRUCTION  
OF A MIXED USE DEVELOPMENT COMPRISING RESIDENTIAL  
APARTMENTS ABOVE RETAIL SHOPS, COMMERCIAL TENANCIES  
AND ASSOCIATED CARPARKING AREAS

at  
LOT 1, DP50193, LOT 3, DP1104857, PT.1, DP506764, LOTS 100 & 200,  
DP1017091,  
AKUNA & TERRALONG STREET  
KIAMA

scale 1:500 @ A3  
date OCTOBER 2017  
drawn djm SJ chkd ADM  
drawing  
DEVELOPMENT APPLICATION  
RESIDENTIAL LEVEL 2 PLAN  
Project No. Drawing No. issue  
2016-19(a) A-105 G



## RESIDENTIAL LEVEL 3 PLAN

ISSUE	DATE	DESCRIPTION	INITIALS	CHKD
G	27.10.17	RE-ISSUED FOR DEVELOPMENT APPLICATION	SP	ADM
F	20.10.17	RE-ISSUED FOR DEVELOPMENT APPLICATION	SP	ADM
E	27.09.17	RE-ISSUED FOR DEVELOPMENT APPLICATION	SP	ADM
D	19.07.17	RE-ISSUED FOR DEVELOPMENT APPLICATION	SJ	ADM
C	15.03.17	RE-ISSUED FOR DEVELOPMENT APPLICATION	SP	ADM
B	25.11.16	RE-ISSUED FOR DEVELOPMENT APPLICATION	SP	ADM
A	14.11.16	ISSUED FOR DEVELOPMENT APPLICATION	SP	ADM

sign \_\_\_\_\_ date \_\_\_\_\_  
These drawings are not to be scaled. Figured dimensions shall be used in all cases.

LEGEND	
●	SUNLIGHT ACCESS
●	CROSS VENTILATION

COPYRIGHT - These drawings remain the exclusive copyright of ADM Architects. Reproductions in any form whether electronic, digital or otherwise shall not be allowed except by express permission granted in writing by ADM Architects.  
FIGURED DIMENSIONS - These drawings are not to be scaled. Figured dimensions shall be used in all cases.  
DISCREPANCIES IN DIMENSIONS/POSITIONS/LOCATIONS/FINISHES The Contractor is to verify any dimensional, location or finish discrepancy with ADM Architects prior to any physical construction or setting out so that ADM Architects is given the opportunity to resolve potential discrepancies or conflicts in sufficient time without causing abortive work. The Contractor shall be responsible for notifying ADM Architects of any such discrepancy or conflict that may arise on site.  
COORDINATION OF WORKS - These drawings are to be read in conjunction with the full set of consultant's drawings, specifications, reports and DA conditions.  
NOMINATED ARCHITECT - The nominated Architect for ADM Projects (Australia) Pty Ltd T/as ADM Architects is Angelo Di Martino AIB No 7608

**adm**  
ARCHITECTS

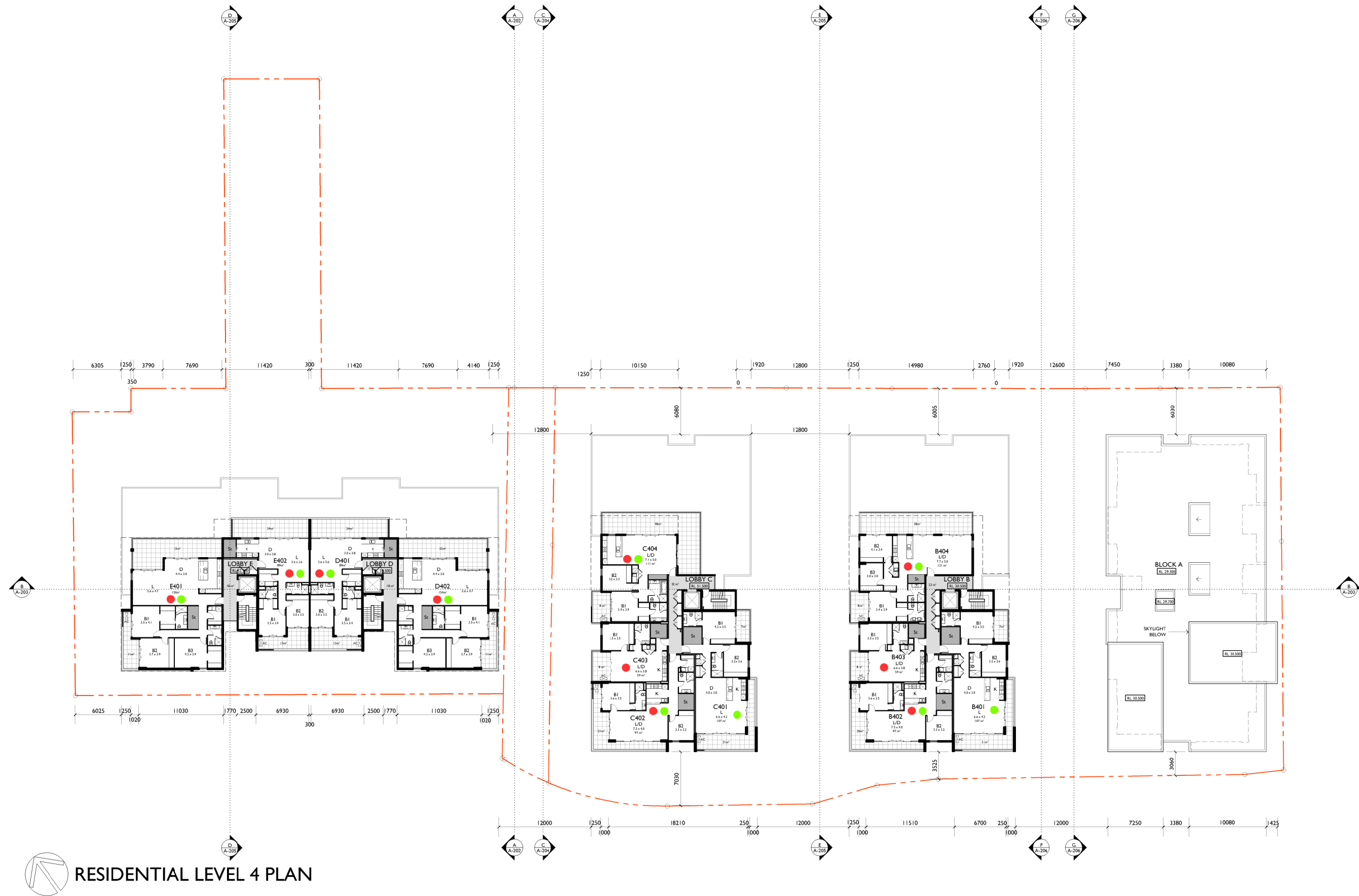
94 Kembla St Wollongong NSW 2500 PO Box 3061 Wollongong  
ph: 02 4228 6400 fax: 02 4228 6455 www.admarchitects.com.au

**NICOLAS  
DAOUD &  
CO PTY. Ltd**

Project  
DEMOLITION OF EXISTING STRUCTURES AND CONSTRUCTION  
OF A MIXED USE DEVELOPMENT COMPRISING RESIDENTIAL  
APARTMENTS ABOVE RETAIL SHOPS, COMMERCIAL TENANCIES  
AND ASSOCIATED CARPARKING AREAS  
at  
LOT 1, DP50193, LOT 3, DP1104857, PT.1, DP506764, LOTS 100 & 200,  
DP1017091,  
AKUNA & TERRALONG STREET  
KIAMA

scale 1:500 @ A3  
date OCTOBER 2017  
drawn djm SJ chkd ADM  
drawing  
DEVELOPMENT APPLICATION  
RESIDENTIAL LEVEL 3 PLAN  
Project No. Drawing No. issue  
2016-19(a) A-106 G





## RESIDENTIAL LEVEL 4 PLAN

ISSUE	DATE	DESCRIPTION	INITIALS	CHKD
G	27.10.17	RE-ISSUED FOR DEVELOPMENT APPLICATION	SP	ADM
F	20.10.17	RE-ISSUED FOR DEVELOPMENT APPLICATION	SP	ADM
E	27.09.17	RE-ISSUED FOR DEVELOPMENT APPLICATION	SP	ADM
D	19.07.17	RE-ISSUED FOR DEVELOPMENT APPLICATION	SJ	ADM
C	15.03.17	RE-ISSUED FOR DEVELOPMENT APPLICATION	SP	ADM
B	25.11.16	RE-ISSUED FOR DEVELOPMENT APPLICATION	SP	ADM
A	14.11.16	ISSUED FOR DEVELOPMENT APPLICATION	SP	ADM

sign \_\_\_\_\_ date \_\_\_\_\_  
These drawings are not to be scaled. Figured dimensions shall be used in all cases.

LEGEND	
●	SUNLIGHT ACCESS
●	CROSS VENTILATION

COPYRIGHT - These drawings remain the exclusive copyright of ADM Architects. Reproductions in any form whether electronic, digital or otherwise shall not be allowed except by express permission granted in writing by ADM Architects.  
FIGURED DIMENSIONS - These drawings are not to be scaled. Figured dimensions shall be used in all cases.  
DISCREPANCIES IN DIMENSIONS/POSITIONS/LOCATIONS/FINISHES The Contractor is to verify any dimensional, location or finish discrepancy with ADM Architects prior to any physical construction or setting out so that ADM Architects is given the opportunity to resolve potential discrepancies or conflicts in sufficient time without causing abortive work. The Contractor shall be responsible for notifying ADM Architects of any such discrepancy or conflict that may arise on site.  
COORDINATION OF WORKS - These drawings are to be read in conjunction with the full set of consultant's drawings, specifications, reports and DA conditions.  
NOMINATED ARCHITECT - The nominated Architect for ADM Projects (Australia) Pty Ltd T/A ADM Architects is Angelo Di Martino ARB No.7608



94 Kembla St Wollongong NSW 2500 PO Box 3061 Wollongong  
ph: 02 4228 6400 fax: 02 4228 6455 www.admarchitects.com.au

**NICOLAS  
DAOUD &  
CO PTY. Ltd**

Project  
DEMOLITION OF EXISTING STRUCTURES AND CONSTRUCTION  
OF A MIXED USE DEVELOPMENT COMPRISING RESIDENTIAL  
APARTMENTS ABOVE RETAIL SHOPS, COMMERCIAL TENANCIES  
AND ASSOCIATED CARPARKING AREAS  
at  
LOT 1, DP50193, LOT 3, DP1104857, PT.1, DP506764, LOTS 100 & 200,  
DP1017091,  
AKUNA & TERRALONG STREET  
KIAMA

scale	1:500 @ A3
date	OCTOBER 2017
drawn	djm SJ chkd ADM
drawing	DEVELOPMENT APPLICATION
Project No.	RESIDENTIAL LEVEL 4 PLAN
2016-19(a)	Project No. Drawing No. issue
	A-107 G

NOT FOR CONSTRUCTION